

ERGOCUT AW 201

AUTOCUT AW 201P



PB0003	6m	Central Adaptor	1

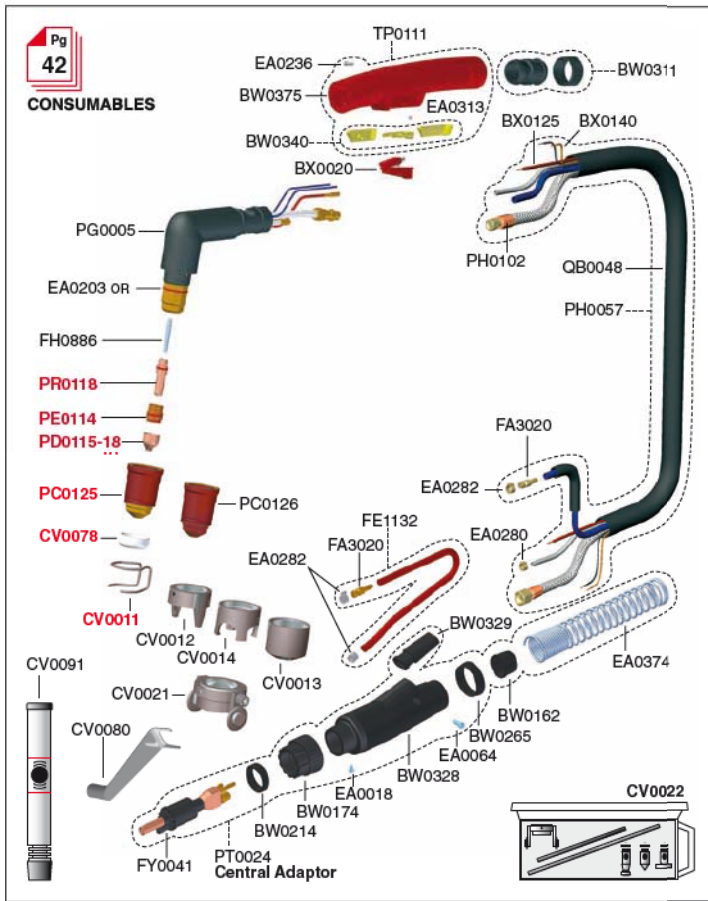
PB0006	6m	Central Adaptor	1

BW0162	joint	10
BW0174	nut	1
BW0214	washer	10
BW0265	ring	10
BW0311	cable support	1
BW0328	back box	1
BW0329	cable protection	1
BW0340	trigger	1
BW0375	red Plasma handle	1
BX0020	trigger	10
BX0125	pilot arc cable 2.5 mm ²	(m)
BX0140	cable 2x0.50 Ø5.2	(m)
CV0011	stand off guide	10
CV0012	stand off guide	2
CV0013	gouging shield	2
CV0014	stand off guide	2
CV0021	carriage	1
CV0022	circle attachment	1
CV0078	nozzle ceramic shield	10
CV0080	electrode wrench	1
CV0091	flowmeter PW180	1
EA0018	screw M4x6	50
EA0053	screw M4x4	50
EA0064	screw 3.9x16	50
EA0127	o ring Ø 20.63x2.62 Viton	10
EA0203	o ring Ø 22x2 red	10
EA0236	screw Ø 3x12	10
EA0282	d.h. clamp Ø 9.5	10

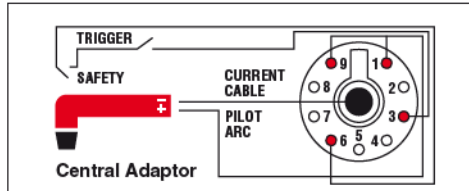
EA0313	spring	10
EA0374	spring	1
FA3020	quick connector	10
FE1132	gas hose+quick conn.	1
FY0041	Plasma conn. (m)	1
PC0125	nozzle	2
PC0126	high insulation nozzle	2
PD0115-10	Ø 1.0 tip	10
PD0115-12	Ø 1.2 tip	10
PD0115-14	Ø 1.4 tip	10
PD0115-16	Ø 1.6 tip	10
PD0115-18	Ø 1.8 tip	10
PD0115-20	Ø 2.0 tip	10
PD0115-30	Ø 3.0 tip	10
PE0114	diffuser	2
PG1005	torch head	1
PG1006	torch head	1
PH0057	6m - 1/4G	1
PH0058	6m - 1/4G	1
PH0102	power cable 6m 1/4G	1
PH0219	6m - Shield	1
PR0118	electrode Hf	10
PT0024	kit Plasma conn.	1
QB0048	EPDM Ø26x28	(m)
QB0161	shield	(m)
TP0061	black handle metallic	1
TP0111	complete handle	1

XXXX-XX STANDARD CONSUMABLES IN RED

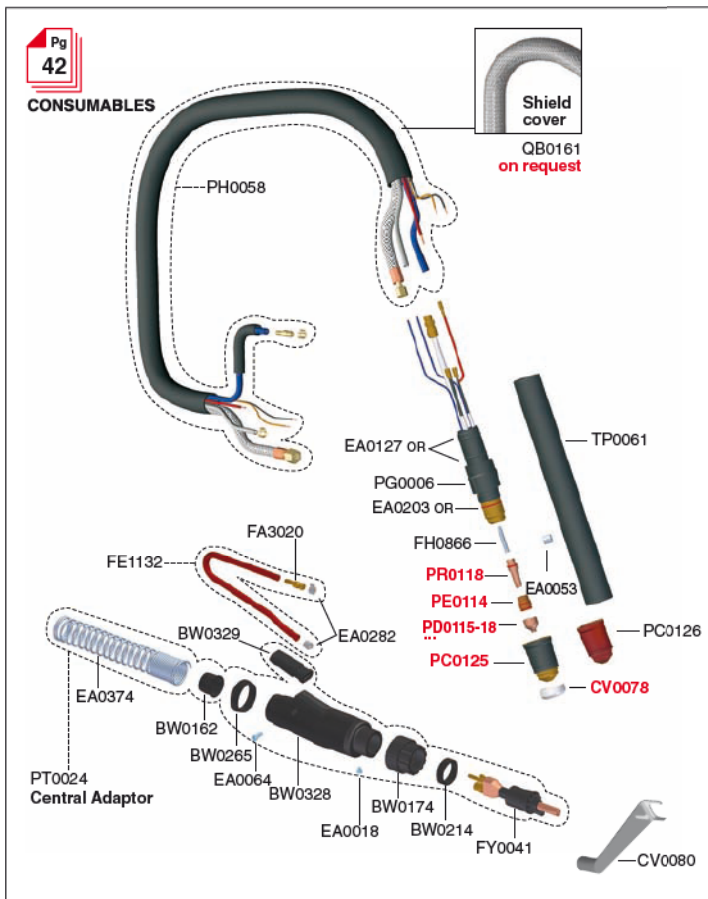
COMPLETE TORCHES CONSUMABLES CONNECTORS SPARE PARTS



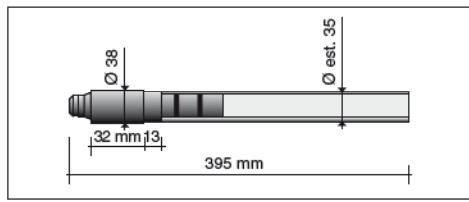
ERGOCUT AW 201



	HF		6 m		1.2 Kg		1 m
	V _{peak} 500		4 bar		50 l/min		2÷4 bar
	X _{100%} 200A		1.45 l/min		40÷50 mm		



AUTOCUT AW 201P



	HF		6 m		1.2 Kg		1 m
	V _{peak} 500		4 bar		50 l/min		2÷4 bar
	X _{100%} 200A		1.45 l/min		40÷50 mm		